

Shipboard Preparedness for Emergency Steering in Port Waters

Number: 07 / 2024

Date Issued: 15th July 2024

Date of effect:	15 th July 2024
Details:	Shipboard Preparedness for Emergency Steering in Port Waters
Former Notice:	Nil
Distribution:	All Port Users
Attachments:	Nil

All vessels calling at the Port of Geraldton are required to have a suitably qualified and competent person on standby in the vessel's steering gear room when the vessel is navigating in port waters as indicated below.

For inbound vessels: The standby person must be present in the steering gear room from the time prior to the vessel entering the Shipping Channel, until the vessel is in the harbour basin.

For outbound vessels: The standby person must be present in the steering gear room from the time all mooring lines are released, until the vessel has passed beacons 1 and 2, at the seaward entrance of the Shipping Channel.

The standby person in the steering gear room should be:

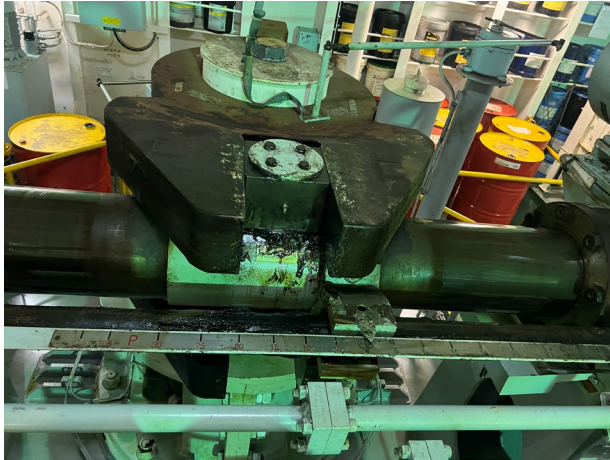
1. Trained and familiar with emergency steering procedures and should be provided with a direct means of communication to the vessel's bridge.
2. Able to identify and communicate the actual position of the rudder to the bridge (rudder angle) when requested.
3. Able to change over to local emergency steering mode and steer the vessel as per directions from the vessel's bridge.
4. Able to identify and change over to the back up power sources (emergency generator) for emergency steering, in case of power failure, when instructed to do so.
5. Only dismissed from steering gear room in consultation with the Pilot.
6. The vessel's Master must ensure that the standby person in the steering gear room does not operate any machinery or steering system, unless instructed by the bridge.

Any questions or feedback regarding this Local Marine Notice should be addressed to the Mid West Port Authority Marine Team.

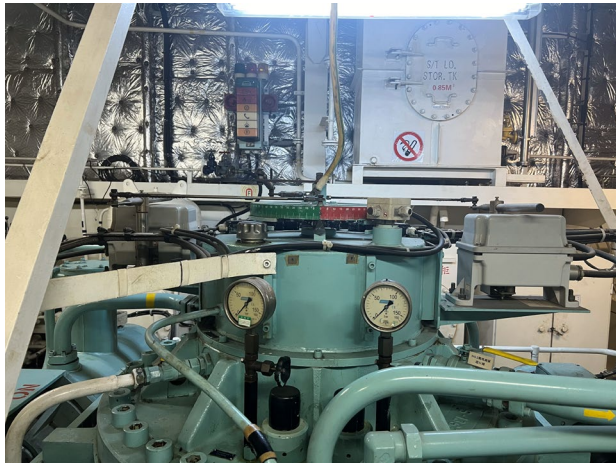
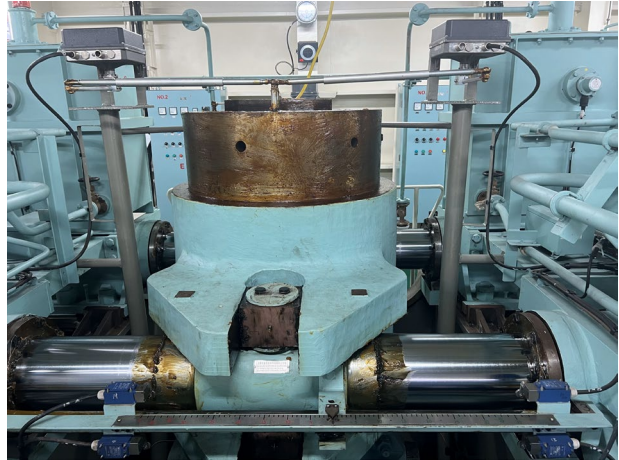


Heathcliff Pimento

Harbour Master (Port of Geraldton)



View of Local Rudder Angle Indicator



View of Local Rudder Angle Indicator & Gyro



Communication Equipment